



The Summer Research Early Identification Program

SR-EIP

The Leadership Alliance:
20 Years of Supporting
Research, Scholarship and
Academic Excellence



For 20 years, the Leadership Alliance has encouraged students from groups traditionally underrepresented in the sciences, engineering, social sciences and humanities to pursue research careers in the academic, public and private sectors. The Summer Research Early Identification Program (SR-EIP) provides undergraduates with training

and mentoring in the principles underlying the conduct of research and prepares them to pursue competitive applications to graduate schools. The SR-EIP is a gateway to ongoing resources, mentoring and professional networks to support all participants along their chosen career path.

PROGRAM STRUCTURE

The SR-EIP is a rigorous research experience designed specifically for undergraduates interested in applying to PhD or MD-PhD programs. Students work for eight to ten weeks in the summer under the guidance of a faculty or research mentor at a participating Leadership Alliance institution. Through one-on-one collaborations, students gain theoretical knowledge and practical training in academic research and scientific experimentation. All participants make oral or poster presentations of their research at the Leadership Alliance National Symposium. Students receive a stipend, and travel and housing expenses are covered by the host institution.

RESEARCH EXPERIENCES

SR-EIP participants are engaged in scholarly research projects offered at 22 Leadership Alliance member institutions. These programs also offer research seminars and workshops in professional development, as well as social and cultural activities. The institutions set high standards and offer outstanding, closely mentored research experiences in a broad range of academic disciplines that are indicated in the “Research Sites” section of this brochure. With one common application, students can apply for a research experience at up to three of the 22 research sites (see chart). Students should refer to each institution’s website for specific information on research opportunities and program requirements before submitting their application.

SPECIAL PROGRAMS

The Lilly Scholars Program, funded by Eli Lilly Company and Foundation, supports students who previously have participated in the Leadership Alliance SR-EIP in a STEM (science, technology, engineering or mathematics) discipline.

The Leadership Alliance Mellon Initiative (LAMI), funded by the Andrew W. Mellon Foundation, supports students who are interested in pursuing doctoral level training in the humanities and social sciences through research opportunities at University of Chicago, University of Pennsylvania, Washington University in St. Louis, New York University, Brown, Columbia, Harvard, Princeton, Stanford, Tufts, and Yale Universities.

RESEARCH SITES

	APPLIED MATHEMATICS	COMPUTER SCIENCE	ENGINEERING	HUMANITIES	LIFE SCIENCES	MATHEMATICS	PHYSICAL SCIENCES	PSYCHOLOGY	SOCIAL SCIENCES
	R E S E A R C H D I S C I P L I N E S								
BROWN UNIVERSITY, PROVIDENCE, RI			X	X	X	X	X		X
COLUMBIA UNIVERSITY, NEW YORK, NY				X	X		X	X	X
DARTMOUTH COLLEGE, HANOVER, NH	X	X	X	X	X	X	X	X	X
HARVARD UNIVERSITY, CAMBRIDGE, MA				X	X*		X	X	X
HOWARD UNIVERSITY, WASHINGTON, DC	X	X	X	X	X	X	X	X	X
HUNTER COLLEGE, NEW YORK, NY					X		X	X	
JOHNS HOPKINS UNIVERSITY, BALTIMORE, MD		X	X		X		X		
MONTANA STATE UNIVERSITY, BOZEMAN, MT		X	X		X		X	X	X
NEW YORK UNIVERSITY, NEW YORK, NY	X~			X	X				X
PRINCETON UNIVERSITY, PRINCETON, NJ	X	X	X	X	X	X	X	X	X
STANFORD UNIVERSITY, STANFORD, CA	X	X	X	X		X	X~~	X	X
TUFTS UNIVERSITY, MEDFORD, MA	X	X	X	X	X**		X	X	X
UNIVERSITY OF CHICAGO, CHICAGO, IL	X			X	X	X	X	X	X
UNIVERSITY OF COLORADO BOULDER, CO	X	X	X		X		X		
UNIVERSITY OF MARYLAND, BALTIMORE COUNTY			X		X		X	X	
UNIVERSITY OF MIAMI, CORAL GABLES, FL					X				
UNIVERSITY OF PENNSYLVANIA, PHILADELPHIA, PA		X	X	X	X				X
UNIVERSITY OF VIRGINIA, CHARLOTTESVILLE, VA			X		X				
VANDERBILT UNIVERSITY, NASHVILLE, TN		X	X	X	X		X	X	X
WASHINGTON UNIVERSITY IN ST. LOUIS, MO			X	X	X		X~~~		X
WEILL CORNELL, NEW YORK, NY					X***				
YALE UNIVERSITY, NEW HAVEN, CT	X	X	X	X	X	X	X	X	X

* CAMBRIDGE AND BOSTON

** MEDFORD AND BOSTON

*** WEILL CORNELL GRADUATE SCHOOL AND WEILL CORNELL MEDICAL COLLEGE IN NYC

~ COMPUTATIONAL BIOLOGY ONLY

~~ EARTH SCIENCES

~~~ PHYSICS

## HOW TO APPLY



Interested students should apply through the SR-EIP Online Application available at [WWW.THELEADERSHIPALLIANCE.ORG](http://WWW.THELEADERSHIPALLIANCE.ORG). The application requires:

- Biographical and academic information
- Current resume information
- Statement of purpose
- Two letters of recommendation
- Official transcripts (must be mailed)

*It is the responsibility of the applicant to ensure that the entire application is complete by the February 1 deadline. Allow sufficient time for the processing of your transcript(s).*

## ELIGIBILITY REQUIREMENTS

Applicants must be currently enrolled full-time in an accredited public or private college or university in the U.S. or its territories, as recognized by the U.S. Department of Education. All applicants must:

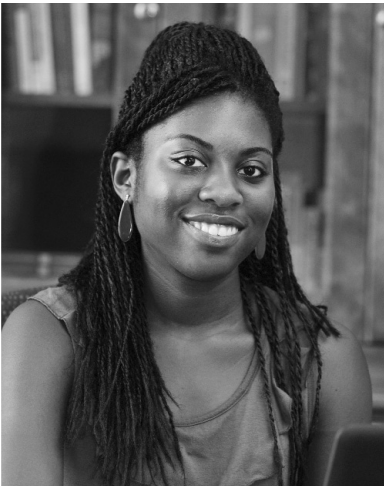
- Be in good academic standing with a GPA of 3.0 or better
- Demonstrate interest and potential to pursue graduate study toward a PhD or MD-PhD
- Have completed at least two semesters and have at least one semester remaining of their undergraduate education by the start of the summer program
- Be a U.S. citizen or have permanent resident status at the time of application



*Note: The SR-EIP is not designed for students pursuing professional training for careers in the practice of law, business administration, clinical medicine, clinical psychology or the allied health professions.*

## APPLICATION REVIEW PROCEDURE

Students interested in the SR-EIP must complete the SR-EIP Online Application no later than February 1, 2012. Once registered through the online application, students may track both their application and placement status.



All complete applications will be reviewed at the Executive Office. Applications that meet the Leadership Alliance's eligibility requirements will be considered for possible placement by the three SR-EIP research sites selected by the applicant. All offers of placement will come directly from the SR-EIP research sites between February and April.

*The Leadership Alliance programs encourage diversity to further its goal of preparing young scholars from*

*underrepresented and underserved populations for graduate training and are not exclusionary on the basis of race, color, sex, age, religion, national and ethnic origin, disability, veteran status, socioeconomic background, sexual orientation, gender identity and gender expression.*

# THE LEADERSHIP ALLIANCE NATIONAL SYMPOSIUM

**Celebrating 20 Years, 2000 SR-EIP  
Participants and 200 Doctoral Scholars  
July 27-29, 2012**



The Leadership Alliance National Symposium (LANS) is the culmination of the summer research experience for SR-EIP participants. The 2012 LANS will mark 20 years of summer research experiences and conference activities. Celebration of the Leadership Alliance's 20th Anniversary will be a significant feature of the 2012 LANS. In addition to presentations by prominent scholars and speakers, the symposium will highlight two decades of the Alliance's accomplishments as well as the institutional and individual contributions that secured the foundation for the program's ongoing success.

*The Leadership Alliance is an academic consortium of 32 institutions of higher learning, including leading research and teaching colleges and universities. The mission of the Alliance is to develop underrepresented students into outstanding leaders and role models in academia, business and the public sector.*



Students make oral presentations or present posters about their summer research projects to a national audience of peers, faculty and representatives from the public and private sectors. Speakers, workshops and panel discussions foster a sense of community while providing practical information about graduate school and career opportunities.



## MEMBER INSTITUTIONS

Brooklyn College  
Brown University  
Chaminade University of Honolulu  
Claflin University  
Columbia University  
Cornell University  
Dartmouth College  
Dillard University  
Harvard University  
Howard University  
Hunter College  
Johns Hopkins University  
Montana State University-Bozeman  
Morehouse College  
Morgan State University  
New York University  
Princeton University  
Spelman College  
Stanford University  
Tougaloo College  
Tufts University  
University of Chicago  
University of Colorado Boulder  
University of Maryland, Baltimore County  
University of Miami  
University of Pennsylvania  
University of Puerto Rico  
University of Virginia  
Washington University in St. Louis  
Xavier University of Louisiana  
Vanderbilt University  
Yale University

**THE LEADERSHIP ALLIANCE**

BOX 1963 • PROVIDENCE, RI 02912 • (401)863-1474

[WWW.THELEADERSHIPALLIANCE.ORG](http://WWW.THELEADERSHIPALLIANCE.ORG)

SUMMER RESEARCH EARLY IDENTIFICATION PROGRAM